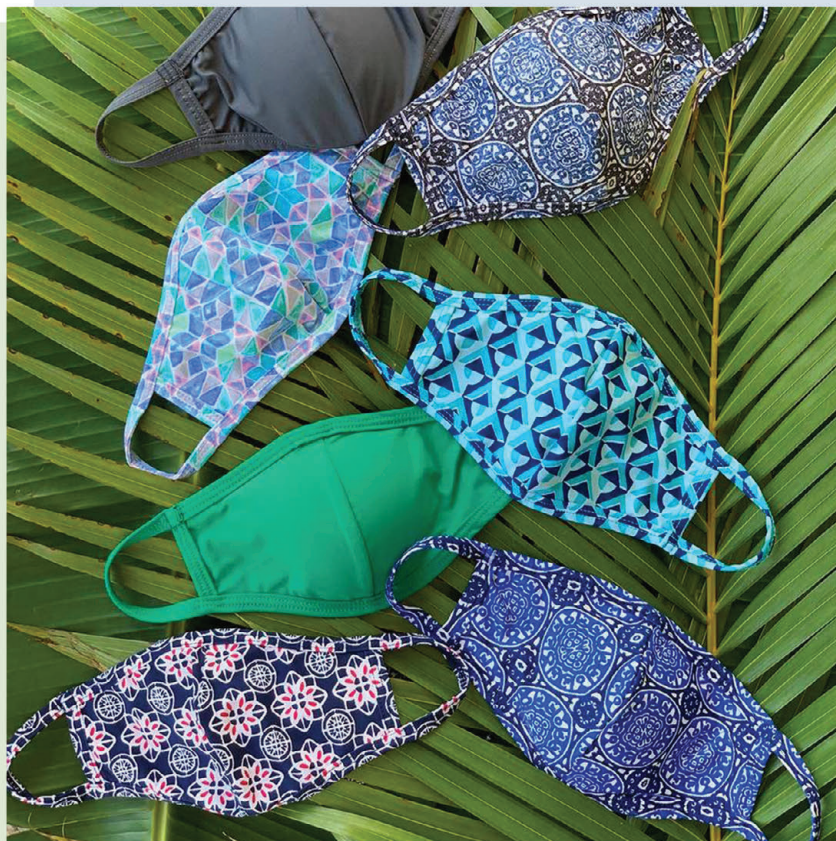




Helen Jon

# Fashion **FACE MASK**



ANTIBES BLACK\*



BLACK (COMING SOON)



COMPASS GEO PRINT\*



MINERAL GREY



NAVY (COMING SOON)



PALM SPRINGS PRINT\*



SEAGLASS\*

---

**HJAC0806**

---

82/18 Nylon/spandex | 2-ply stretch fabric for tighter fit | Latex free | USA made  
Joined seam worn on wearer's lower left | UPF 50+ | Non-medical grade  
Pre-washed before packed | One size fits most | Sold individually

\*WHILE SUPPLIES LAST. NEW PATTERNS COMING SOON.

## *Ordering Details*

- All face mask sales are final and non-returnable.

Disclaimer: The mask should not be used (1) in any surgical setting or where significant exposure to liquid, bodily or other hazardous fluids, may be expected; (2) in a clinical setting where the infection risk level through inhalation exposure is high. For guidance on usage, please consult the Centers for Disease Control (CDC), available at [www.cdc.gov](http://www.cdc.gov).